

# SKY

BI

## Airport Business Intelligence

How do incidents in a major destination impact your traffic?  
 What effect does changed rates have on traffic figures and charges?  
 Which scenarios arise from the start-up of an aggressive low-cost carrier at your airport (or at a competing neighbour airport)?  
 If you want to create and evaluate this kind of scenarios you should take a closer look at our Airport Business Intelligence Solution SKY-BI.

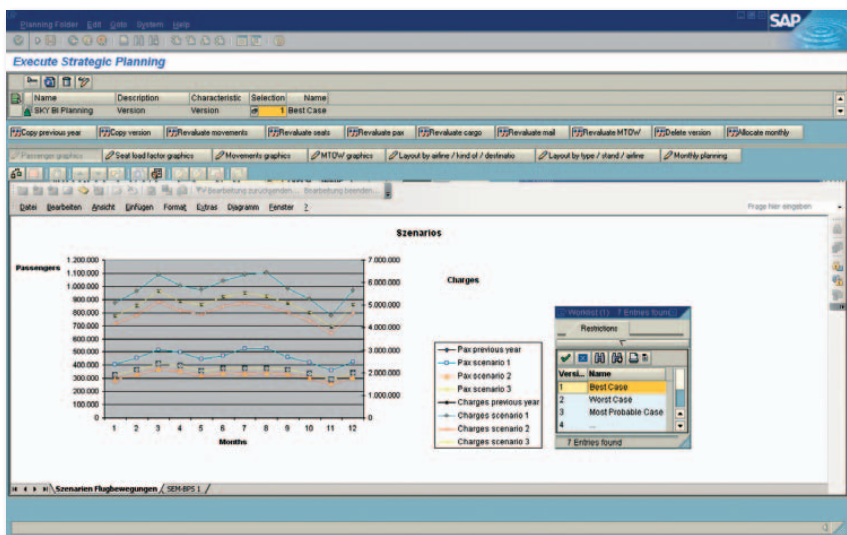
## Scope of Functions

SKY-BI allows for the flexible planning and reporting of traffic figures (key performance indicators) and charges (revenues) in different scenarios.

Typically, a set of scenarios include:

- a best case scenario
- a worst case scenario
- a most probable case scenario

Additionally, SKY-BI supports unlimited special scenarios. The scenarios can be set up either using seasonal flight schedules or copying and manipulating actual figures from the previous year. Both methods can be easily combined as well. Graphical queries allow for scenario comparisons and evaluations.

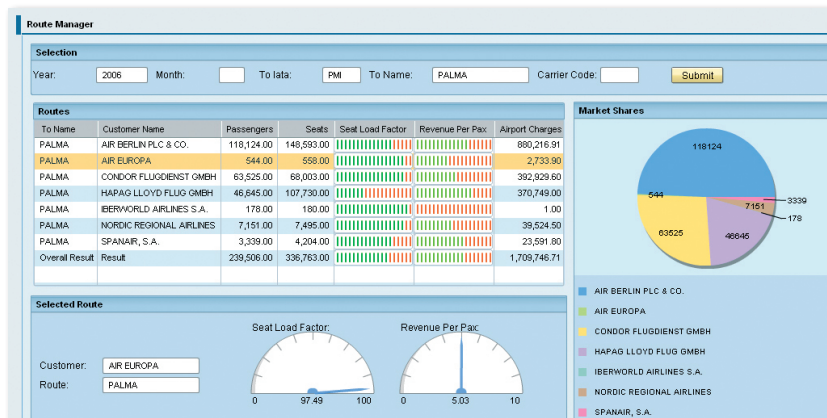


Sample from SKY-BI: monthly comparison of different scenarios with number of passengers (lower lines) and revenues (upper lines)

Besides the planning functions SKY-BI comes with a comprehensive reporting about actual figures like key performance indicators, revenues, delays and more. Also, monthly ACI statistics, EU reports, and national legal reporting can be generated from Sky-BI.

Graphical dashboards show the highlights at a glance. Ad-hoc reports can be created by the end users with an easy to use drag and drop tool.

All evaluations may be processed with a spreadsheet as well. Plan/actual comparison complete the set of available reports.



Sample from SKY-BI: dashboard showing the airline competition on a certain route.

**Airports Council International**  
**Monthly Airport Traffic Statistics**

CITY: Sky-BI  
AIRPORT: Sky-BI Airport Code: SKY

Period (mm/yy)	April 2008	This Year	Last Year
<b>I. Aircraft Movements</b>			
(a) Passenger and Combi (combination) Aircraft	4 564		4 434
(b) All-Cargo Aircraft	109		132
(c) Total Air Transport Movements (a + b)	4 673		4 566
(d) General Aviation and Other Aircraft Movements	1 725		2 055
Total Aircraft Movements (c + d)	6 398		6 621
<b>II. Commercial Passengers</b>			
(a) International Passengers (enplaned + deplaned)	227 543		206 004
(b) Domestic Passengers (enplaned + deplaned)	165 741		125 082
(c) Total Terminal Passengers (a + b)	393 284		331 086
(d) Direct Transit Passengers	1 097		1 872
Total Passengers (c + d)	394 381		332 958
<b>III. Cargo (Freight &amp; Mail) in Metric Tonnes</b>			
(a) International Freight (loaded + unloaded)	11 090		10 970
(b) Domestic Freight (loaded + unloaded)	2 463		2 510
(c) Total Freight (a + b)	13 553		13 480
(d) Mail (loaded + unloaded)	245		258
Total Cargo (c + d)	13 798		13 738
Event(s) affecting traffic for the period reported:			
Prepared by: FAX/Phone/Telex No:			
Reporting Instructions:			

## Benefits

- Gain the lead through better information. Quick simulations give answers on „what if“ questions.
- Generating traffic forecasts from seasonal flight schedules saves time and workload.
- all relevant figures are concisely available on single layout. This allows for an easy and convenient planning process.
- all data are consistently stored in a central data base. This eliminates the effort for the management of local files.

## ISO Software System GmbH

Eichendorffstraße 29  
90491 Nuremberg - Germany

Phone +49 911 - 99 594-0  
Fax +49 911 - 99 594-129  
E-Mail: info@isogmbh.de

## Technology

SKY-BI uploads data from your existing systems (source systems). SKY-Billing, SKY-Base and other AODB or ERP systems may be considered as source systems. SKY-BI performs an automatic upload from the source systems into a data warehouse.

SKY-BI is built upon mySAP BI technology, but does not require a SAP ERP implementation. For SKY-Base users ISO offers SKY-BI on a ready to run basis. The ready to run solution can be implemented within a couple of weeks.

## ISO Software System

ISO has been a reliable partner for numerous airports for many years in the areas of air traffic management, airport management and SAP implementations. ISO's scope of services includes requirements analysis, project management, configuration and programming, training, support and software maintenance. ISO maintains a quality management system which is certified according to DIN EN ISO 9001.

As a software partner of SAP AG, ISO has a strong consulting team with excellent skills and experiences.

All rights reserved. SAP and all SAP products mentioned in the text as well as the respective logos and trademarks or registered trademarks of SAP AG in Germany and other countries. All details are without guarantee.

