

Customer Relationship Management for Tourism

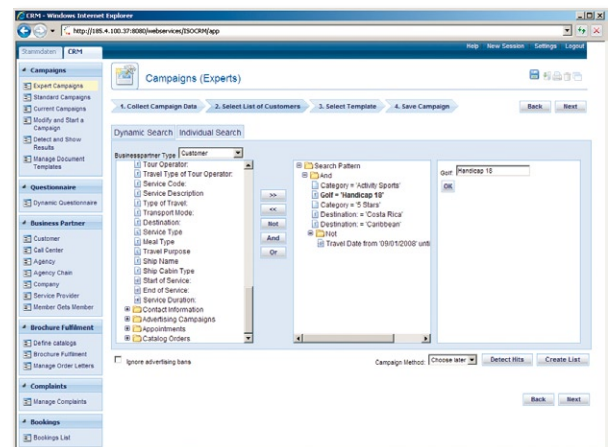
What is Emerald:

- + Emerald is the CRM solution especially designed for tourism companies
- + Campaign Management
- + Call center, help desk, agency management
- + Web-based technology lets you easily manage all your client related data
- + Workflow guided processes with strict concept of data visibility



Why should you decide for Emerald:

- + Powerful functionality for your call center staff and marketing experts
- + Mine and classify all your clients and business partners
- + Increase your sales by knowing your clients and business partners
- + Run expert campaigns via e-mail, mail and survey within minutes
- + Push to grow your business by running campaigns for your travel agencies
- + Manage your partner travel agency sales & clients efficiently
- + Convert complaint clients into long term satisfied clients



Please contact me for further details on how to best use our solution:

Holger Voss
ISO Software Systems Inc.
 390 Notre Dame West (Suite 332)
 Montreal, QC (Canada), H2Y 1T9
 Office: +1 (514) 787 1672
 Fax: +1 (514) 787 1675
 Holger.Voss@isotravel.com

Use Emerald with additional recommended modules:

- + Pacific Internet Booking Engine (B2C, B2B, White Label)
- + Hosting via ISO
- + OCEAN (outgoing tour operator system)
- + Travel XML (web interface)